

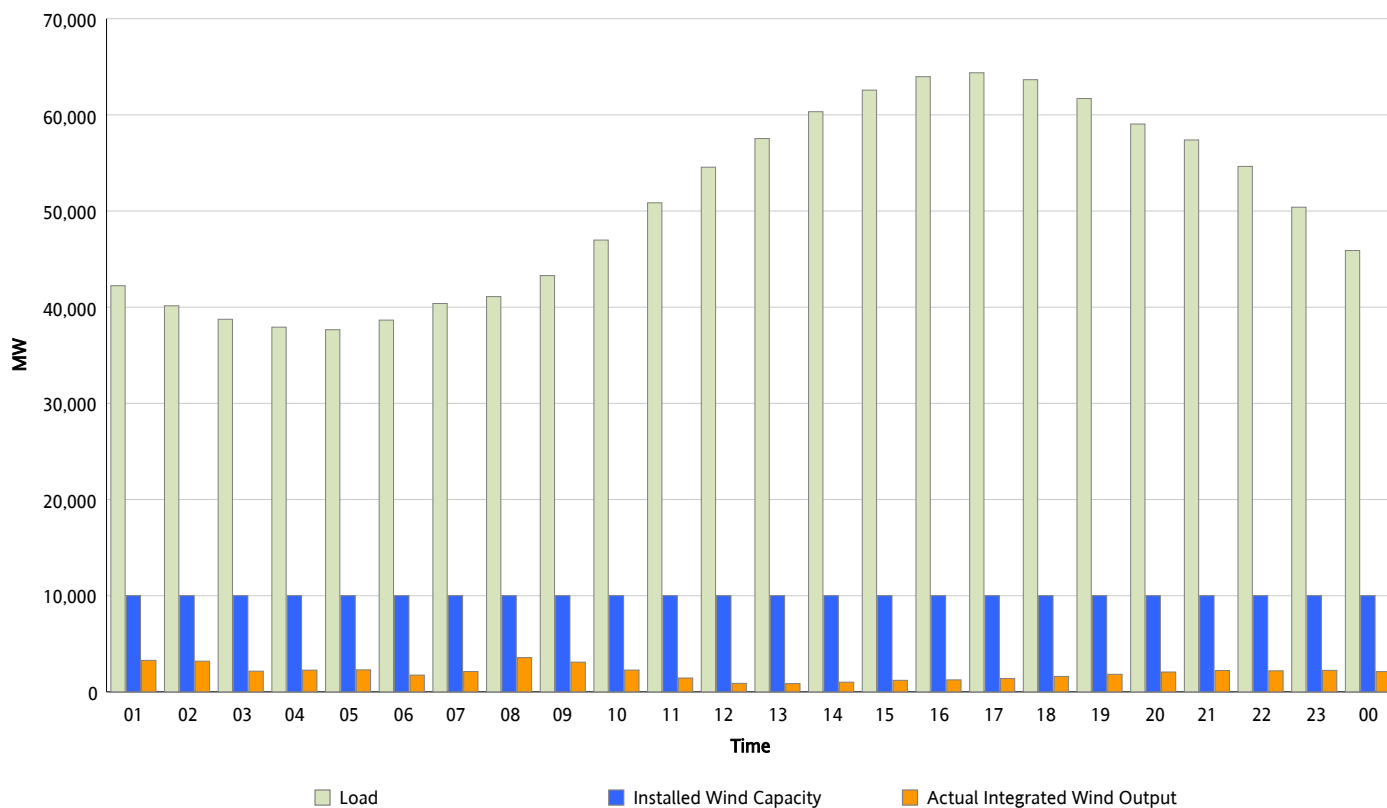


ERCOT Grid Operations

Wind Integration Report : 08/13/2012

Peak Load	64,377 MW
Load Peak Hour (HE)	17
Wind Over Peak	1,382 MW
Wind Record 06/19/12	8,368 MW
Max Wind Value*	3,917 MW
Wind Peak Time	07:44
Wind Integration %	9.47 %

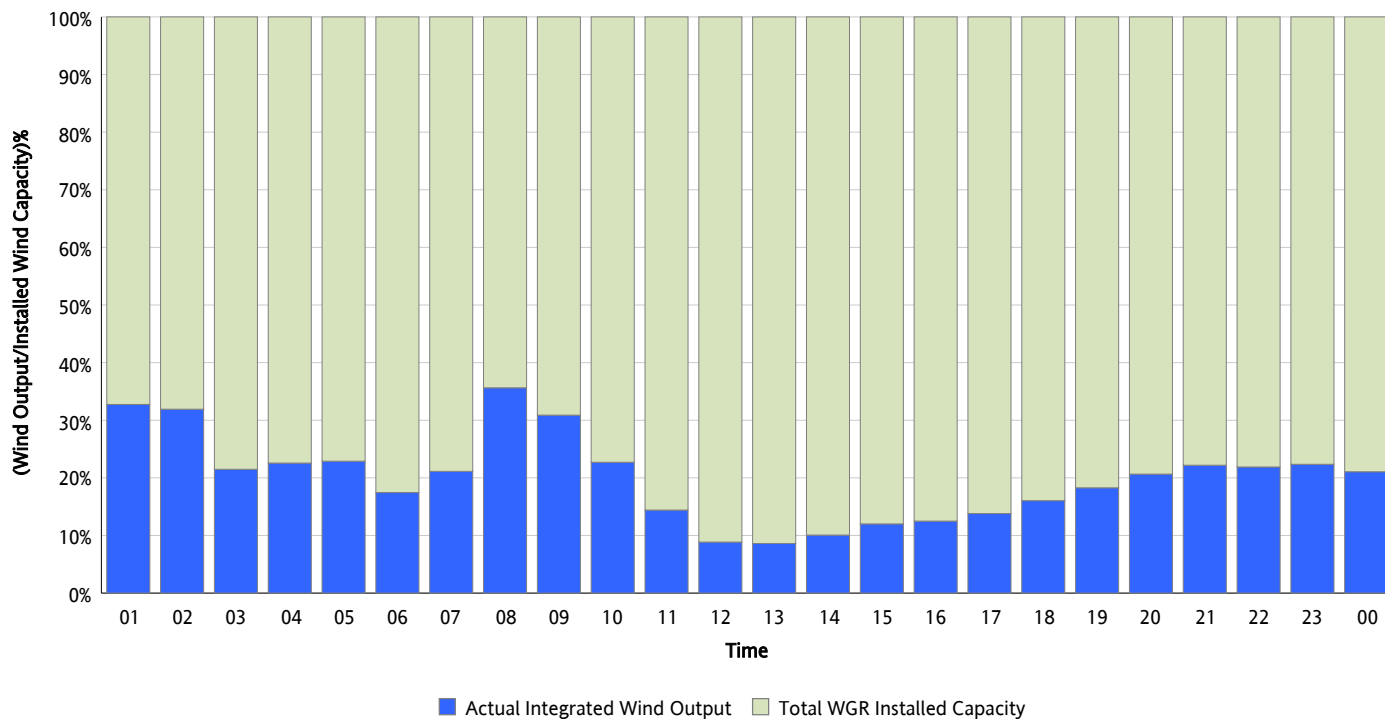
Hourly Average Actual Load vs. Actual Wind Output
08/13/2012



** Wind Record and Wind Max represent instantaneous values and the rest of the values are integrated over the hour*

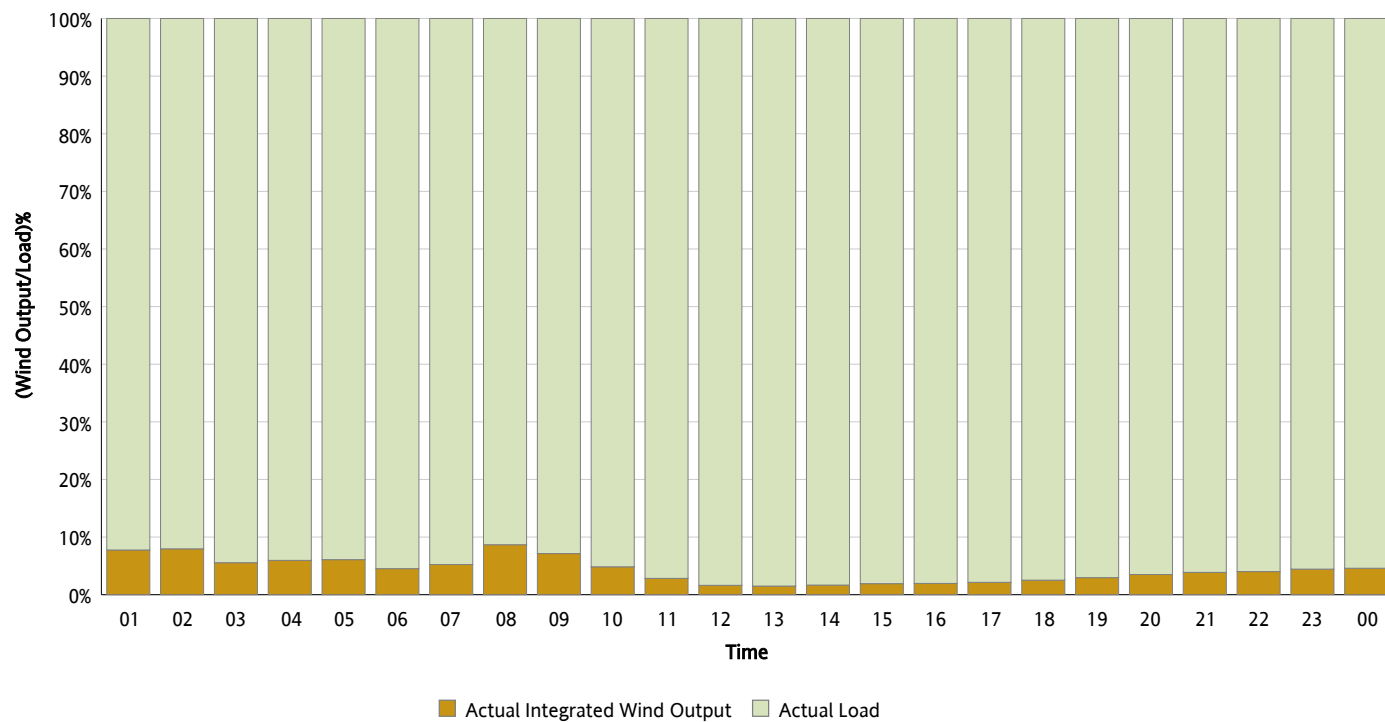
Actual Wind Output as a Percentage of the Total Installed Wind Capacity

08/13/2012



Actual Wind Output as a Percentage of the ERCOT Load

08/13/2012



ERCOT Load vs. Actual Wind Output

08/06/2012 - 08/13/2012

